

AMERICAN TROPICAL CASUAL FURNITURE

215-294-9982

AMERICANTROPICALCASUAL.COM • PHILADELPHIA, PA

CATALOG 2024



Our Mission

American TropiCasual Furniture is dedicated to bringing well-designed furniture of exceptional value to the hospitality market.

All featured products are true contract quality and are guaranteed to look better longer.

All of our seating options uniquely reflect our “value” philosophy. Every chair or bar stool has been sat-in, evaluated, adjusted, redesigned, revised, reevaluated and finally selected and approved to offer you the best seating choices possible.

We feature Werzalit® brand table-tops made of weather-resistant, seamless molded laminate.

We also offer a variety of tables in solid wood, wood-edged, wood veneer, quartz, Corian, Staron and Bellavati and other solid surface resins, natural teak, HPL and granite tops, all engineered to meet any design requirement.

It is our mission that our clients always feel that they get more than they pay for!

For more detailed photographs, different views, and colors and details, please visit our website at www.americantropicalcasual.com.

TABLE OF CONTENTS

TABLE TOPS

Werzalit®	3-6
Carino.....	5
Teak.....	6
Quartz	7
Indoor Wood	8
Corian®, Staron®	9
Bellavati®	10
Weave Cast Aluminum.....	13

BASES

Futura.....	11
Econox	11
Aspen.....	11
Andalusia.....	12
Jennifer.....	12
Cast Iron	13
Weave.....	13

CHAIRS

Cast Aluminum.....	14
Teak.....	14
Manhattan	14
Oviedo	15
Woven Aluminum	15
Curacao.....	16
Parisienne.....	16
Resin	17

UMBRELLAS..... 18-21

FIRE PITS..... 22

FENCING..... 23



PRODUCT IS
SUITABLE FOR
OUTDOOR USE



CHAIR IS
STACKABLE



MADE IN
THE USA

WOOD LOOK

Our weather-resistant wood look tops are perfect inside or out.



werzalit
LASTING. BEAUTY.

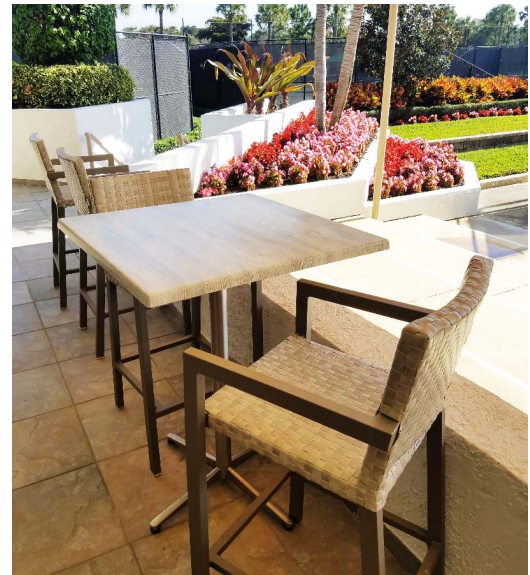
Werzalit tops are created by fusing melamine top and bottom surfaces to a resin-impregnated, chopped hardwood substrate under heat and pressure. The process produces a seamless, weather-resistant, water-resistant tabletop that lasts and looks good for a long time.

Werzalit tops are chip and moisture resistant, yet lightweight and perfect for both indoors and outdoors.

In addition to our standard offerings, Werzalit tops can be made with custom printed designs including logos. All that is needed to get started is a JPEG image at 300 dpi and we will be pleased to make a simulation for your approval.

Sizes Available

ROUND	24" 28" 32" 36" 42" 48"
SQUARE	24" 28" 32" 36"
SPECIAL SIZES	24" x 28" 24" x 32" 28" x 44" 32" x 48"



019
Planked Beech



029
City



033
Colorado



046
Tempera silver



057
Indiana



065
Palissade grey



096
Palissade Wood



103
Wenge



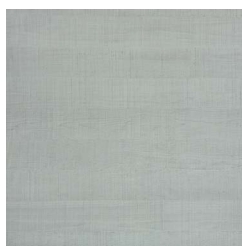
116
Walnut



119
Arizona



122
Ex Works



150
Palissade White



170
Limed Oak



178
Ponderosa White



179
Ponderosa Grey

WOOD LOOK

Our weather-resistant wood look tops are perfect inside or out.



werzalit[®]
LASTING. BEAUTY.



122
Ex Works



211
Kbanda taupe



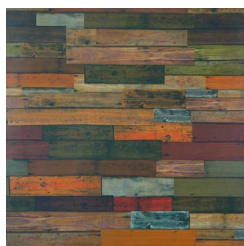
214
Montpellier



246
Idaho



264
Plank Blue



266
Plank Red



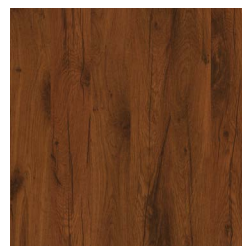
271
Kbanda Rouge



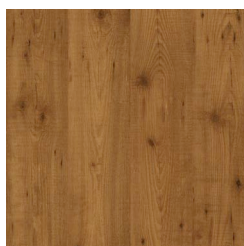
295
Findus



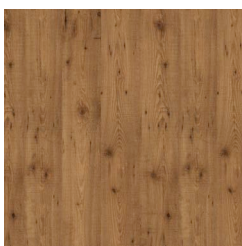
296
296 Findus Grey



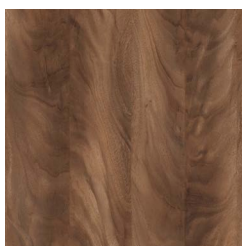
316
Antique Oak



321
Pinie



033
Colorado



504
Lagos



505
Enea



508
Kansas 2



509
Shaniko



510
Chadna



520
New Boston



522
Sylva



525
Thor

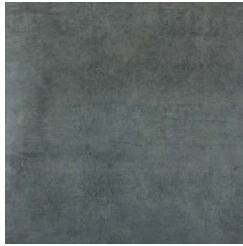


STONE LOOK

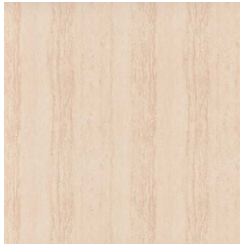
Chip-resistant and moisture-resistant Werzalit stone look tops are lighter and more practical than real stone.



werzalit
LASTING. BEAUTY.



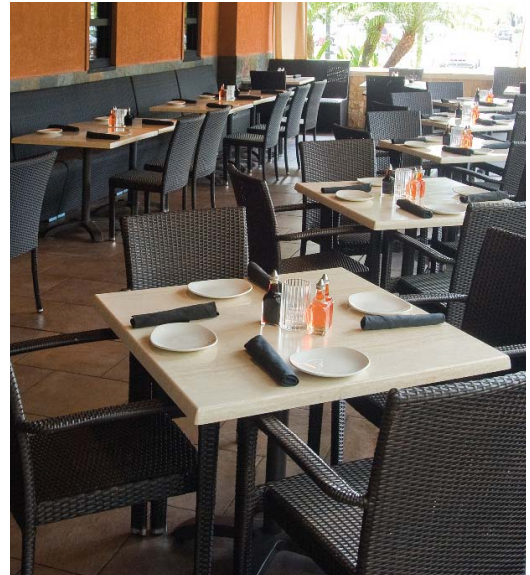
029
City



034
Travertin



083
Factory



112
Puntinella



121
Genoa Marble



144
Sicilian Marble



174
Sienna Marble



209
Almiera Marble



210
Marquina Marble



223
Rustbrown



506
Verona

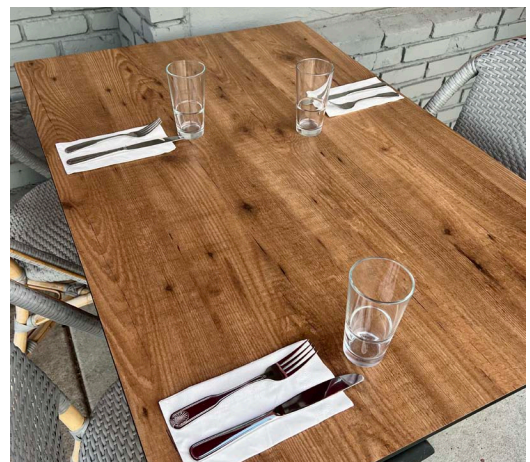
CARINO



werzalit
LASTING. BEAUTY.

Werzalit® Carino tops are made using heat and pressure like Werzalit® tops, but with a core of solid phenolic resin and fiber, so it can be made thin and perfectly flat. Werzalit® Carino tops are resistant to weather, moisture, scratching, warping, chipping, and swelling.

Beautiful, functional, stylish, practical...what more can you ask for!



Sizes Available

ROUND	24" 28" 32" 36" 42" 48"
SQUARE	24" 28" 32" 36"
SPECIAL SIZES	24" x 28" 24" x 32" 28" x 44" 32" x 48"

Carino tops are available in all Werzalit colors.

CUSTOM



werzalit
LASTING. BEAUTY.

Custom Werzalit tops are made to order. All that is needed to get started is a JPEG image at a resolution of 300 dpi and a minimum order of only 15 tops.



Sizes Available

ROUND	24" 28" 32" 36" 42" 48"
SQUARE	24" 28" 32" 36"
SPECIAL SIZES	24" x 28" 24" x 32" 28" x 44" 32" x 48"



TEAK



Our teak tops are produced with real plantation-grown teak and feature a 1 1/8" edge profile with a strong screw fabrication and reinforced slats for your choice of base. They are fabricated, weathered, and finally sanded again to remain smooth in use. Please note that since these are natural, unfinished tops, they will weather to a silver grey unless oiled or finished.

Community tables available in both dining and bar height. Tables are 39"x72" closed and extend to 95 1/2".

Sizes Available

ROUND	24" 30" 36"
SQUARE	24" 30" 36"
RECTANGLE	24" x 30" 30" x 48"



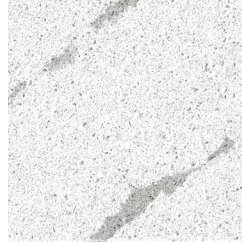
SEDONITE QUARTZ



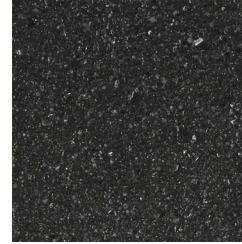
Sedonite Quartz tops are manufactured in the USA with 40% recycled glass so they achieve a rating for being recycled products for LEED purposes.

Unlike most quartz tops, they are fabricated in molds, permitting custom sizing and shaping of the edges creating unique edge and field color combinations

Tops can be manufactured in most standard and many special sizes. They are extremely durable.



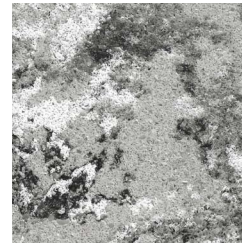
American Carrara



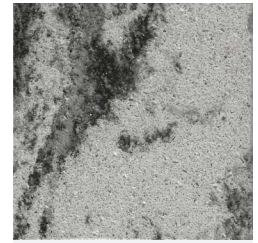
Batcave NC



Biscayne Bay



Black Hills SD



Black Mesa AZ

Standard Sizes Available

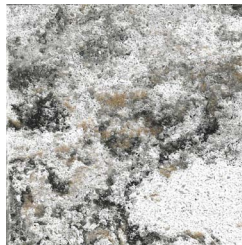
ROUND 24" | 28" | 32" | 36" | 42" | 48"

SQUARE 24" | 28" | 32" | 36"

RECTANGLE 30" x 60" | 30" x 72"



Broken Arrow OK



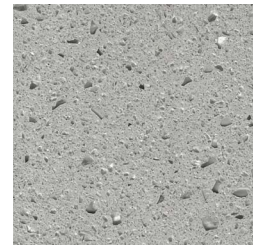
California Gold Rush



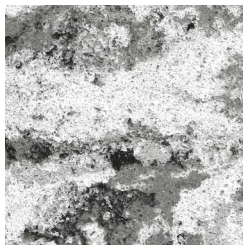
Continental Divide Trail



Currituck



Diamond City MT



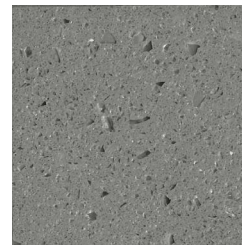
Glacier Park MT



Grayslake IL



Indiana Dunes



Kawaikini Pike



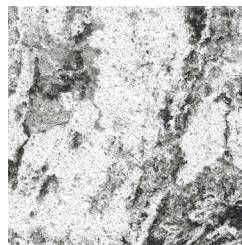
Nine Mile Canyon



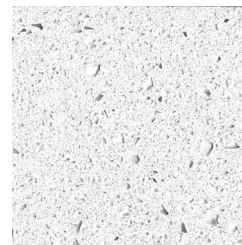
Outer Banks



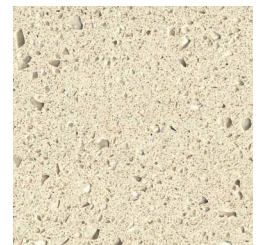
Sleeping Bear Dunes



Vail CO



White Mountain Alaska



Yellow Rock UT

INDOOR WOOD TOPS



American TropiCasual presents new looks in real wood tabletops in addition to standard solid wood plank tops. We have available wood edge with laminate inserts, metal and T-mold tops with laminate, self-edge laminate, and padded tops. We also present engineered live edge tops, charred and distressed tops, multi-species tops all finished with a premium quality polyurethane finish formulated for restaurant use. See our website for a more detailed presentation.



Butcher Block

Ash Butcher Block, 1.5", natural finish.



Olde Barn

Olde Barn Series, 1.75" in Random Plank Ash and Poplar available in Vintage color only.



Charred

Random Plank Ash, 1.25" with charred natural finish.



Multi-species

Multi-Species Random Plank 1.25" in Chestnut finish.



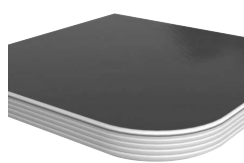
Engineered Live Edge

Engineered Live Edge, 1.25" in Ash, natural finish.



Padded vinyl

Padded Vinyl covering on 1.25" MDF core with recessed stapling on underside.



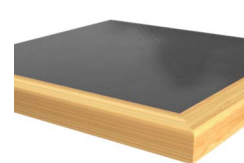
Laminate

Laminate on 1.25" MDF with fluted aluminum edge and radiused corner.



Laminate

Laminate on 1.25" MDF with a smooth aluminum edge and radiused corner.

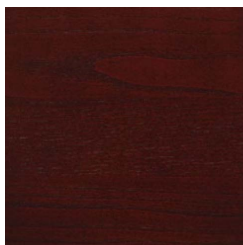


Wood Edge

Wood Edge with eased edged profile and laminate insert, 1.25".

Standard Wood Colors

Others colors, distressing, radius corners, different edge treatments available at upcharges.



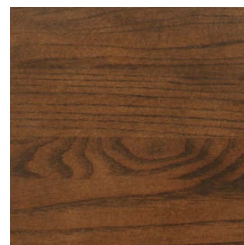
Mahogany



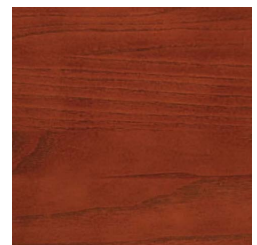
Driftwood



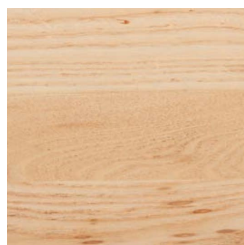
Oak



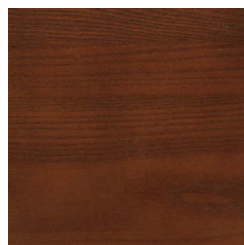
Vintage



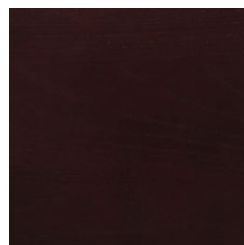
Cherry



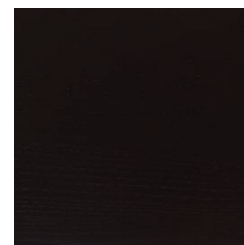
Natural



Chestnut



Walnut



Black

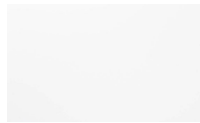
American TropiCasual features Genuine Corian, Staron by Samsung, and Bellavati solid surface acrylic tops as manufactured by an experienced fabricator offering a durable, classic, premium tabletop providing years of trouble-free service.

A selection of popular colors are presented here and on the following page. Tops are manufactured with a 1.5" drop edge, 1" radius corners, and a 3/4" marine plywood mounting plate. Standard edge is an eased edge, but ogee, bullnose, semi-bullnose and beveled edges are available at an upcharge.

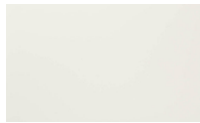


Staron® by Samsung				Genuine Corian®		
Grade A						
	Sanded Icicle Si414	Sanded Gold Dust SG441	Sanded Grey SG420	Pebble Grey PG810	Savannah	Cobalt
	Pebble Saratoga PS820	Sanded Vermillion SV430	Sanded Mocha SM453	Aspen Mine AM633	Sahara	Sand
	Aspen Pepper AP640	Aspen Brown AB632	Sanded Dark Nebula DN421	Sanded Onyx SO423	Flint	Sandstone
Grade B						
	Quarry Oyster TO310	Quarry Mesa QM242	Quarry Bluff QB244	Earthen Bark QL257	Moss	Platinum

BELLAVATI® COLORS



Alpine
DFS1-000



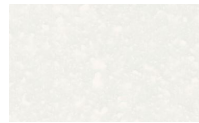
Crema
DFS1-001



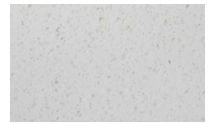
Silk
DFS1-101



Basmati
DFS1-210



Blizzard
DFS1-209



Brine
DFS1-409



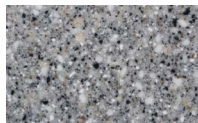
Paramount
DFS1-307



Sea Pine
DFS1-410



Cirrus
DFS1-408



Argon
DFS1-206



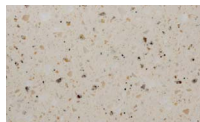
Cosmos
DFS1-105



Coronado
DFS1-208



Canopy
DFS1-211



Palmetto
DFS1-306



Luminary
DFS1-401



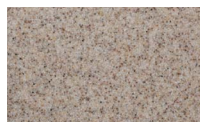
Harbor
DFS1-102



Gobi
DFS1-202



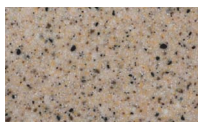
Costa
DFS1-103



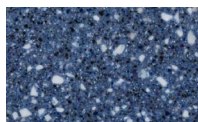
Sorrento
DFS1-104



Monarch
DFS1-301



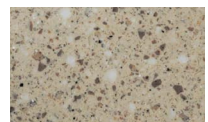
Valero
DFS1-204



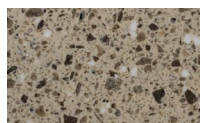
Tranquil
DFS1-201



Prestwick
DFS1-303



Shiloh
DFS1-304



Pangea
DFS1-305



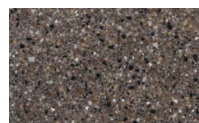
Patina
DFS1-203



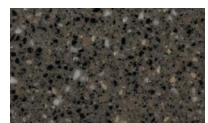
Rockway
DFS1-200



Ore
DFS1-100



Essex
DFS1-205



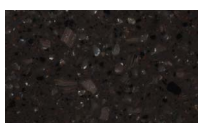
Verona
DFS1-302



Willow
DFS1-207



Buckeye
DFS1-300



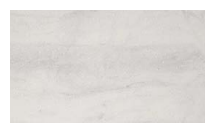
Molten
DFS1-400



Frost Line
DFS1-413



Formosa
DFS1-406



Hail Stone
DFS1-503



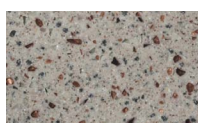
Anchorage
DFS1-309



Turnberry
DFS1-402



Augusta
DFS1-411



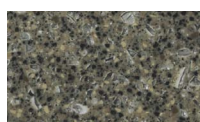
Copper Mill
DFS1-404



Hazeltine
DFS1-502



Grande Latte
DFS1-501



Haven
DFS1-403

TABLE BASES-FUTURA



Stainless Steel Futura

Futura Stainless Steel bases are manufactured in brushed 304 series stainless steel cladding powder coated steel to provide a beautiful, heavy, stable base that can be used outdoors with minimum maintenance. Sizes available are 18", 22" and 28" round, 18" and 22" square as well as a bolt down fixed model.



Stainless Round
18" | 22" | 28"



Stainless Square
18" | 22"



Bolt Down

Black Futura

Futura Black bases are manufactured in galvanized mild steel and double powder coated for corrosion resistance. They can be used outdoors with minimum maintenance. Sized available are 20" round and square, 28" round, and a bolt down fixed model.



Black Square
20"



Black Round
20" | 28"

ECONOX™



Econox is a base of stainless steel cladding over a powder coated iron casting, with a cast aluminum spyder. Available in a 3 leg, 4 leg and rectangle model, dining and bar height.



Econox™ 3



Econox™ 4



Econox™ Rectangle

ASPEN FLIP NESTABLE



Aspen is a flip base for smaller tables up to 36" round or 32" square for outdoor use. Aspen bases nest so that up to 10 tables can be loaded on a special cart. Made of cast aluminum for corrosion resistance.



Flip black pepper and polished nested



Flip black pepper flipped



Flip black pepper level

CAST ALUMINUM



Andalusia

Dining height or bar height they can handle tables up to 48" round, 36" square or 32" x 48" rectangle.



Andalusia 4

Andalusia 4BH

Andalusia 4S

Andalusia 4SBH

Andalusia Rectangle

Jennifer



Jennifer bases are cast aluminum with form fitting cast iron weights hidden inside for stability. Powder coated in black they come standard with a convenient purse-hook and are also available as an ADA compliant rectangle base as well as the standard base. Bar heights are also available.



Jennifer 4
Black Pepper

Jennifer 5
Black Pepper

Jennifer Rectangle
Black Pepper

CAST IRON

B-Series



Sizes Available

22" x 5" (End Base) | 22" x 22"
 30" x 30" | 22" x 30" | 36" x 36"
 Also available in Bar Height

C-Series



Sizes Available

18" DIA | 22" DIA | 28" DIA
 Standard Black Wrinkle Finish

Bistro



Bistro base is available with three or four legs and in both dining or bar height.

Bases

CAST ALUMINUM



Weave Tables

American TropiCasual cast aluminum Weave tables are durably powder coated and hand decorated to present a classic antique bronze finish. All tables come complete with their bases. The open casting surface is actually perfectly flat. 36" square and 42" round are also available in bar height versions.

Sizes Available

ROUND 24" | 32" | 36" *
SQUARE 24" | 32" | 36" *
RECTANGLE 32" x 48" | 38" x 60"



42" and 48"



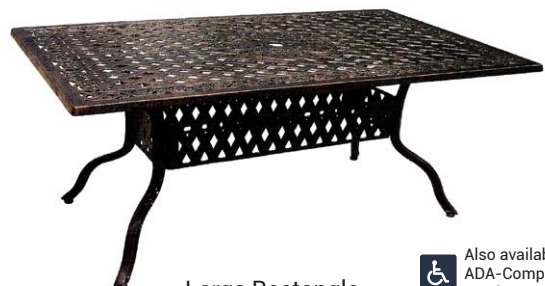
Weave Bar Height Table



Weave Square



Weave Square Bar Height Table



Large Rectangle



Also available in ADA-Compliant Version

CAST ALUMINUM SEATING



Cape Cod and Nantucket seating is a hybrid aluminum chair with cast seats and backs and tubular frame structures for strong, light-weight, stackable construction at reasonable pricing.

Cape Cod



Arm Chair

Bar Stool

Nantucket



Arm Chair

Bench

TEAK



Our genuine plantation-grown commercial-grade teak seating is fabricated then weathered and sanded again to remain smooth in use; these are natural, unfinished items, which will weather to a silver grey unless oiled or finished.

Parsons



Arm Chair

Pacific



Arm Chair

Vegas



Arm Chair

Side Chair

Alice



Folding Chair

Hawaii Bench



Bench

MANHATTAN SERIES STEEL



Manufactured with zinc-treated solid steel and powder-coated for long life, our Manhattan line is a stylish chair available in a variety of colors that can be used outdoors.



Stool



Side Chair



Bar Stool



Vintage Barstool with no back indoor only



Vintage Bar Stool with back indoor only



ALUMINUM SEATING WOVEN



Oviedo

Oviedo is a classic sturdy combination of aluminum frame and high density polyethylene weaving. The chairs are stackable and very comfortable, available in a variety of weaving styles and colors.



Side Chair
(Silk White)



Side Chair



Arm Chair
(Espresso)



Bar Stool
(Espresso)



Bar Stool with
Arms (Espresso)

Villa

Shown in Espresso but available in other colors on special order, our Villa dining booths bring the desirable booth style seating outdoors. Available in standard 48", deuce 30" and a corner model, ours have the backs and seats woven independently so you can sit comfortably. Frames are recessed so you never sit on a rail or post.



Corner Bench
(Espresso)



Standard 48" outdoor booth bench
(Espresso)

Verona

Verona offers stylish armchair comfort in a small footprint, and still they stack 4 high.



Side Chair



Homestead



Side Chair

Maui



Side Chair



Arm Chair

Muses



Club Chair

ALUMINUM SEATING



Curacao

Powder coated heavy weight aluminum frame with teak wood slats.



Side Chair
Silver Frame

Side Chair
Black Frame

Arm Chair
Silver Frame

Bar Stool
Black Frame

Bar Stool
with Arms
Silver Frame

BISTRO STYLE



Key West

Aluminum imitation rattan with textilene upholstery.



Side
Chair

Arm Chair

Bar Stool

Parisienne

Aluminum imitation rattan with HDPE weaving, Color choices, Ivory/Black, Ivory/red, Ivory/ Green, others on special order.



Side Chair
(Black)

Arm Chair
(Red)

Bar Stool
(Green)

RESIN



Our resin seating is ergonomically designed for comfort and conceived to be 100% recyclable for environmental concerns. The resin series is manufactured from polypropylene reinforced with chopped fiberglass to be completely resistant to the elements, and all chairs feature UV-inhibitors to resist color changes. These chairs are lightweight yet strong, comfortable yet compact, and classic yet modern.

Elite



Side Chair

Arm Chair



Bar Stool

June



Side Chair



Arm Chair

Vanity



Side Chair
(White)



Side Chair
(Turtledove)



Side Chair
(Black)

OXY



Side Chair



Bar Stool

Chairs

UMBRELLAS

American TropiCasual umbrellas provide maximum shade with minimum fuss and maintenance. Only marine grade 9 oz fabrics are used. Wind vents are standard. Designed for function, durability and beauty, our umbrellas are offered with aluminum or fiberglass ribs, aluminum masts and either pulley or crank lifts. Tilts are available on many models. Check our website for a more complete presentation.

Eclipse Umbrella

Available in a 10-foot square or 13-foot octagon, the Eclipse Umbrella features full 360 degree rotation combined with an "Infinity Tilt" system (pictured below) that allows for countless tilt angles and provides hours of maximum shade regardless of the position of the sun. It is manufactured with beautiful 9 oz. marine-grade acrylic fabric, which offers unmatched UV-protection and longevity and also makes the Eclipse easy to clean as well as mold and mildew-resistant. The Eclipse is engineered to withstand wind of up to 35 mph, and the included wind stabilizer allows for gusts of up to 40 mph. Multiple mounting options are available for permanent or semi-permanent installation on any surface, and heavy-gauge aluminum and stainless steel parts on marine-grade corrosion-resistant aluminum frames ensure that the Eclipse is ideal for all environments.



Aurora Umbrella

Without a traditional center post, the Aurora is a modern cantilever umbrella that allows you to maximize your space while providing years of trouble-free use and enjoyment. It comes standard with an "Infinity Tilt," enabling it to change positions effortlessly and ensuring hours of protection from the sun and light rain. Suitable for use in low to moderate wind conditions (up to 25-30 mph with included wind stabilizer kit), the Aurora is available in either a 9-foot square or an 11-foot octagon and can be mounted in four different ways for your convenience: with a modular cross base, a galvanized steel plate stack, a fixed mounting plate, or an in-ground base.



LED Lights

UMBRELLAS

Octagonal and Square Market Umbrellas

Our market umbrellas are available in sizes from 6.5 ft square all the way up to a 16- foot octagon. Our most popular sizes are 7.5 ft and 9 ft octagons with fiberglass ribs, pulley pull up and single wind vent. However, fewer larger umbrellas may offer better shade solutions for some spaces. Crank and tilt options can be useful, and LED lighting systems can make terraces and patios more inviting. Fiberglass ribs are more flexible and resistant to breaking yet less expensive than aluminum. For a more comprehensive presentation see our website www.americantropicacausal.com.

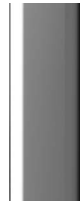


UMBRELLAS-MOUNTING SYSTEMS, BASES AND FINISHES

Mounting Systems, Bases and Poles

These are some of the assorted base options available; please contact ATC for specific mounting solutions.

Pole Finishes



SR
Platinum



MS
Brushed
Silver



WG
Golden Oak



BK
Onyx



HW
Heather
Willow



BZ
Desert
Bronze



WH
Alpine White



CB
Carbon

Mounting Solutions



100A, 150A



23R Black



23R Bronze



23R White



50C Black



50C Bronze



50C White

Steel Plate Bases



50S Black



50S White



75S Black



75SS white



NGU550



24G+8ST



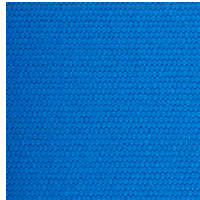
40G+18ST2-BP

UMBRELLA COLORS

American Tropicasual uses 9 oz awning weight fabric for umbrellas manufactured by Sunbrella, Recassins and Outdura, The colors here are standard but upgraded colors are available at extra cost.



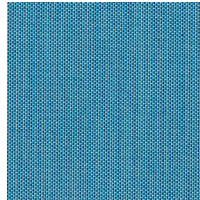
R175
Captain Navy



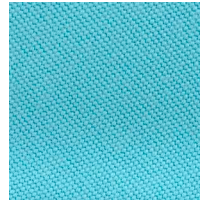
R172
Pacific Blue



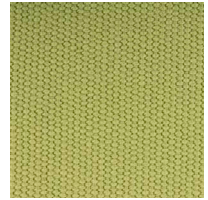
R169
Steel Blue



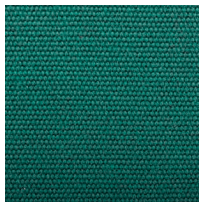
R229
Sapphire



R171
Turquoise



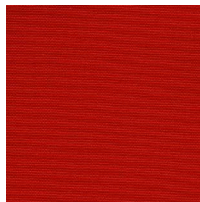
R160
Pistachio



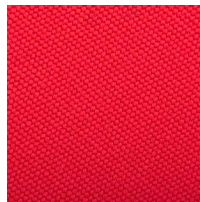
R102
Forest Green



R177
Burgundy



R182
Vermillion



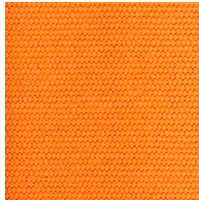
R176
Logo Red



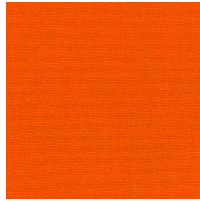
R105
Salmon



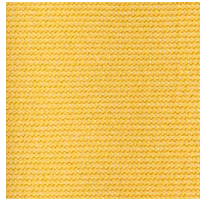
R1014
Chestnut



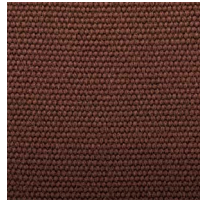
R567
Orange



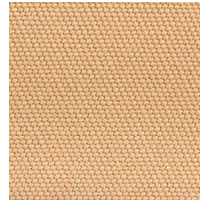
R185
Pumpkin



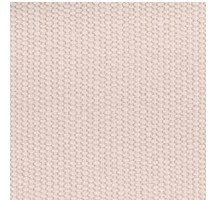
R554
Yellow



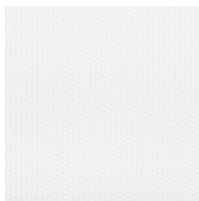
R156
Brown



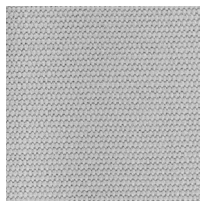
R100
Beige



R126
Linen



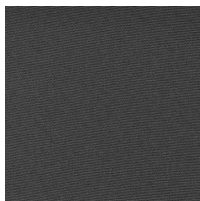
R099
White



R139
Cadet Gray



R196
Titanium



R164
Charcoal Gray



R103
Black



R065
Navy Stripe



R016
Blue Stripe



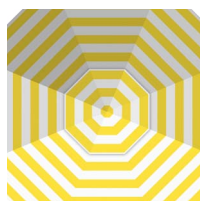
R011
Turquoise Stripe



R012
Red Stripe



R005
Orange Stripe



R055
Yellow Stripe



R017
Black Stripe

Umbrellas

FIRE PITS

Propane fire pits made from aluminum offer a stylish and durable option for restaurants and hotels seeking to create an inviting outdoor ambiance. The lightweight nature of aluminum makes these fire pits easy to move and rearrange, providing flexibility in designing outdoor spaces. Additionally, the propane fuel source ensures convenient operation and allows for adjustable flame settings, making it ideal for accommodating various preferences and creating a cozy atmosphere



Fire Pit **1010**



Fire Pit **1108**



Fire Pit **1201**



Fire Pit **1350**

FENCING

City™ Urban Fencing by American TropiCasual Furniture

City™ Fencing is ideal to define and protect restaurant space on sidewalks, at food courts, beaches, pools...any outdoors area. City Fencing is domestically fabricated from sturdy steel, outdoors powder coated and designed for years of use. Modules of 3' high x 6' long, 3' high x 5' long and 3' high x 4' long are stocked for quick shipping. Other size modules and designs can be fabricated on request. City Fencing accessories include Maitre'd stations, waitress stations, counter dining sections, menu stations and logo panels as well as wind break toppers in clear acrylic. Use City Fencing with Logo panels to extend restaurant brand/advertising recognition as well as defining space.

Send us a photo of the area you want to enclose and measurements and we will be pleased to quote.





AMERICAN TROPICAL CASUAL
FURNITURE

215-294-9982

AMERICANTROPICALCASUAL.COM • PHILADELPHIA, PA

1330 Apple Blossom Drive, Yardley, PA 19067

215-294-9982

www.americantropicalcasual.com